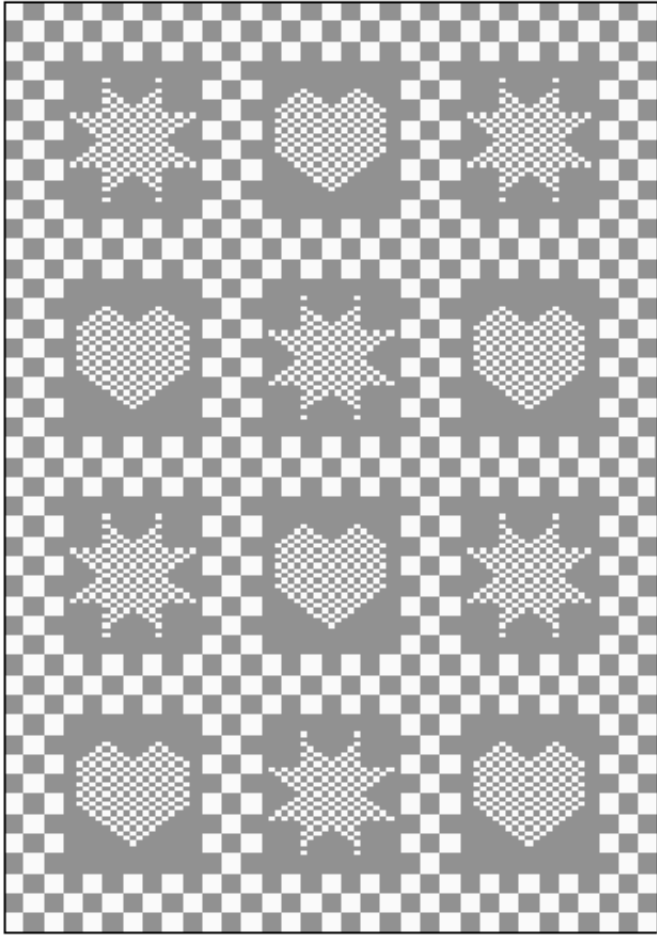


Hearts & Stars EVELYNMCNABB



This cheerfully patterned blanket takes almost no hands-on time or effort to knit making it an ideal charity project for the busy knitter! The checkerboard stitch pattern frames the blanket, creating a nicely ruffled edging all around. Any child-friendly colour would be beautiful, but knitted in warm white really gives a lovely aran feel and makes it gender neutral.

MACHINE

Brother 4.5mm electronic with garter carriage.
Level - Beginner

SIZE

73 X 93cm/29 X 37 in.
Stitch pattern is 198 sts x 376 rows.

YARN

Bramwell Roselan DK, 100% Acrylic.
Finished weight, 375g.

GAUGE

Not important

PATTERN NOTES

Download <heartstr.pat> from Project Linus page at www.knkitwords.com.

I do not use edge cams for most of my blankets and do not experience any trouble with the end stitches knitting off properly. Please feel free to add them if your g carriage seems to need them. After the 'e' wrap cast-on, you will be knitting one row of stockinette on memo. This will make the g-carriage will end on the right, ready for binding off from right to left. If you prefer to bind off from left to right, omit the memo row.

BLANKET PATTERN

99 n's each side of 0. K-carr, WY cast on, K3R. Ravel cord, K1R.

Program pattern as a single motif, to begin on LN99.

G-carr, MC, T9, 'e' wrap cast-on. K1R with memo or input button lit for stockinette row.

RC000, T9, begin pattern, K376R, ending with G-carr on right.

Latch tool bind off loosely around 1 gate peg.

FINISHING

When the blanket is complete and off the machine, roll it lengthwise into a tube and stretch it to set stitches. Weave in beginning and end yarn tails.

I have made dozens of similar g carriage blankets with Roselan and this is my favorite way to soften and block them: Machine wash, cold water, gentle cycle using a cap full of baby shampoo or other gentle soap. Tumble dry on regular heat cycle for 10-12 minutes, checking every 3 minutes to ensure the blanket isn't all bunched up as it tumbles. I just open the dryer door, take it out and give it a shake, then lay it back in the dryer and turn it on for another 3 minutes. The blanket will not be completely dry when it is removed after 12 minutes. Spread a bed sheet out on a table, or use a spare bed, and lay out the blanket nice and square, gently pulling it into shape. I do this at night and in the morning it is ready to go!



After you have gone to all the trouble of washing the blanket before donating it, please let the recipient charity know it's been freshly laundered! They will surely appreciate that, as all donations must be laundered if the charity is in doubt.

This pattern may be used for Project Linus and charity knitting. Please do not use for resale.